



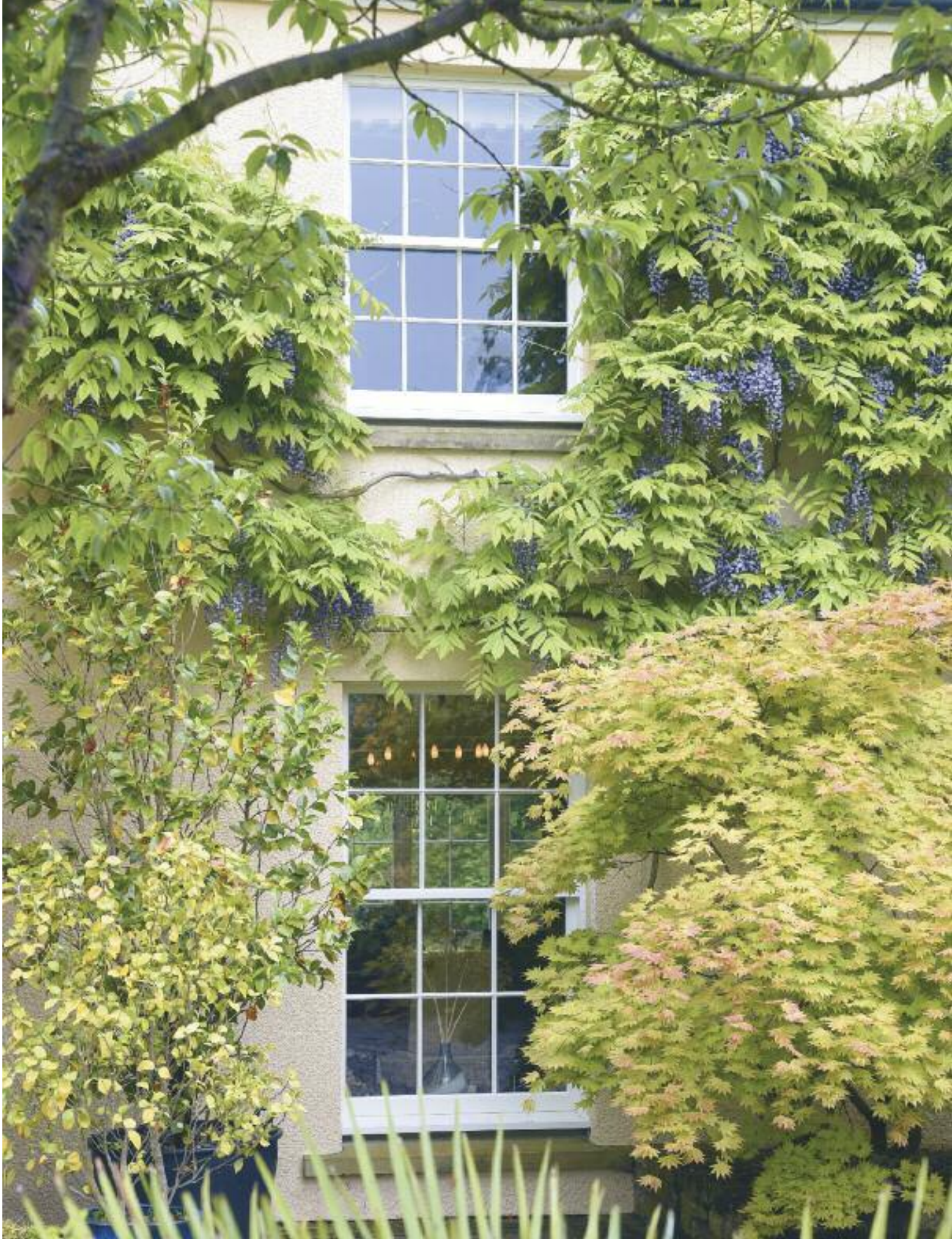
TIMBER
WINDOWS
· LISTED ·

The complete

LISTED GUIDE

www.timberwindows.com





C O N T E N T S



All rights reserved. Except as allowed by law, no part of this publication may be reproduced in any form without written permission. As a result of progressive development, we reserve the right to modify or change specifications and descriptions without prior notice.

All photographs in this brochure are of installations completed by Timber Windows network of local installers.

All designs and colours in the brochure are intended as a guide only - we recommend you inspect physical samples at your local installer before purchase.



Please visit our website for further information
www.timberwindows.com

6	A PASSION FOR ARCHITECTURAL AUTHENTICITY
8	HELPING YOU ENHANCE & PRESERVE YOUR HERITAGE HOME
14	HISTORICAL PRESERVATION WITH MODERN STANDARDS
16	TIME HONOURED SKILLS - OLD MEETS NEW
20	WHY TIMBER WINDOWS LISTED...?
24	WE ARE EXPERT WINDOW MAKERS
36	GLAZING MATTERS
38	ELEGANTLY STYLED SASH WINDOWS
64	TRADITIONALLY STYLED CASEMENT WINDOWS
92	AUTHENTICALLY STYLED FRENCH DOORS
104	ENGINEERED TIMBER V TRADITIONAL WOOD
106	THE REASSURANCE OF DEALING WITH A LOCAL SPECIALIST
108	OUR SHOWROOM TEAMS ARE EXPERTS IN THE SPECIFICATION OF OUR WINDOWS & DOORS



A Passion for

ARCHITECTURAL AUTHENTICITY

Timber Windows Listed - a collection of specially designed windows and doors that have gained positive feedback and approval from planning authorities across the UK.

We have assisted homeowners with buildings from a host of historical periods to meet the planning, conservation and preservation rules for their particular area with authentically designed timber windows and doors.

Knowing and understanding these rules should always be your first step. The authorities assess on a case by case basis, considering the significance and circumstances of the changes that you wish to make. So for this reason it is always best to make an initial approach to your local planning authority.

Our aim is to provide timber windows and doors that not only satisfy these rules but also enhance your home - improving insulation, sound proofing and day-to-day operation - whilst maintaining an authentic appearance for many, many years to come.





TIMBER WINDOWS *listed* HELPING YOU... ...ENHANCE & PRESERVE YOUR HERITAGE HOME



*“The appearance
of the house has been
greatly improved.”*



The wonderful Seabeach Farm in West Sussex has been brought back to life thanks to the current owners' tireless work.

Having been neglected for a number of years, with rotting windows and broken glass, Grade II listed and shown in official records dating back to the 13th century, this house has a fascinating history originally as a residence for agricultural workers, then ownership by the Crown under the rule of Edward VI in the 1500s and later being owned by the Duke of Richmond of the Goodwood Estate.

The owners, Mr & Mrs Jennings employed the services of an enthusiastic and specialist local architect in order to research the history and set out a case to their local authority for the renovation proposals.

*Chadlington front door finished
in 'French Grey' featuring
Polished Chrome door knob,
ring knocker and escutcheon.*

History in the
MAKING



“The property required a ground up renovation. In need of particular attention were the windows, they were rotten and had the glass hanging out, unloved since the 1980s.”

Looking for suitable replacements to meet both the aesthetic and regulatory criteria, Mrs Jennings carried out some online research and discovered the Timber Windows showroom in Horndean.

The conservation officers accepted our product for this historic property, insisting on our 4mm single glazed offering for the front and allowing our ultra slim 14mm double glazed option to the rear, both styles with true bars and putty finishing.

“The windows are now tight, sealed and no leaks...the house feels much warmer.”

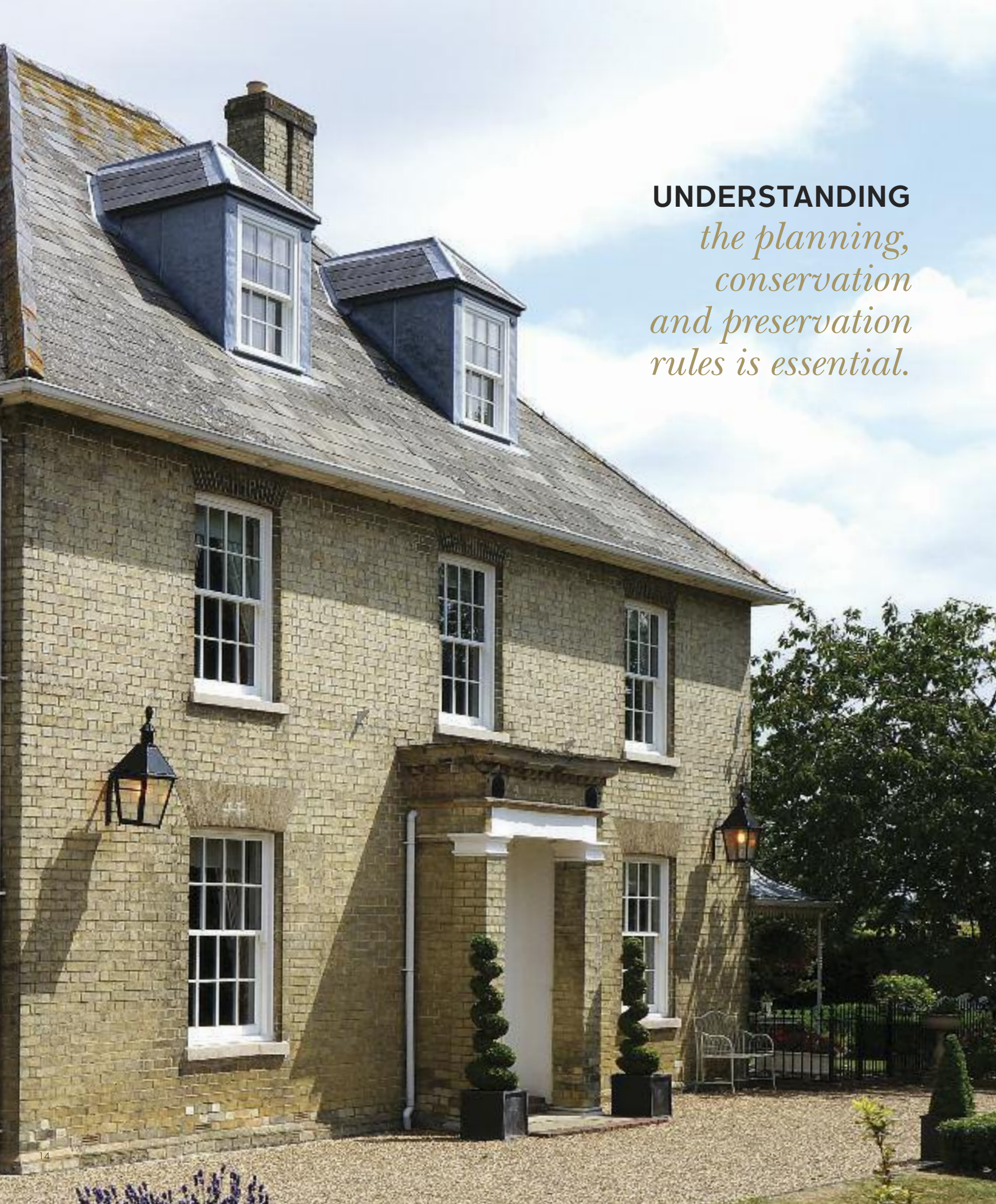


Cottage flush casement windows, finished in 'White' with 4mm single putty glazing. 24mm true bars manufactured in Engineered European Redwood (14mm ultra slim double glazing to rear property windows)

“The fitting was great, fabulous in fact....everyone was very professional.”

Available as a fantastic holiday rental, the property is situated within beautiful countryside and near many outstanding amenities, and looking better than ever.

*“The windows really impressed from the outset...
I was immediately taken by how lovely they were!”*



UNDERSTANDING

*the planning,
conservation
and preservation
rules is essential.*



Historical preservation with **MODERN STANDARDS**

Choosing the most appropriate windows and doors is one of the most important decisions you will make for your home. This is never more poignant than when dealing with properties of conservation and listed status.

Windows and doors are among the most obvious components contributing to a building's style and appearance, so ensuring that these are correct, both from the perspective of aesthetics and regulatory compliance, is vital.

Timber Windows Listed marries preservation of style with exacting methods of construction to produce levels of comfort and convenience that our forebears would envy. The use of engineered timber eliminates twisting, warping and draughts, whilst modern glazing, even in single glazed units, is both warmer and quieter than original glass.

With traditional hand processes and rigorous quality checking, every window and door passes through the hands of experienced, time-served craftsmen. Comprehensive guarantees on every window and door provide lasting peace of mind.





Time honoured skills

OLD MEETS NEW

A meeting of minds – our factory combines state-of-the-art computer controlled machinery with good, old fashioned craft skills – each as important as the other to the overall finish.

With many decades of experience to draw on, the creation of historically authentic windows and doors is the speciality of our highly skilled team.



“With many decades of experience to draw on, the creation of historically authentic windows and doors is the speciality of our highly skilled team.”

All of our windows and doors incorporate the very best glazing, timber and coating technologies to enhance the enjoyment of your period home all year round.

The use of engineered timber ensures that all of our windows and doors will not warp or twist, stick or rub.

Fungal & Insect	Sealed Unit	Hardware	Workmanship	Paint	Stain
					
30 YEARS GUARANTEE	10 YEARS* GUARANTEE	10 YEARS GUARANTEE	10 YEARS GUARANTEE	12 YEARS GUARANTEE	6 YEARS [†] GUARANTEE

* 5 years for 14mm double glazed units. † Not applicable to putty finished products.



LOCAL APPEAL



“The Timber Windows casements were approved with relative ease.”

Having lived in their home for 15 years, the Pearson family took the decision to attempt to make sympathetic updates to their thatched, 1650's Grade II Listed Oxfordshire cottage.

“We spoke to planning officers to initially establish the viability of changing the windows, and this served as a pre-application” the owners explain.

“Once we knew what was acceptable, we were able to approach Timber Windows and begin the conversation.”

The requirement was for replacing single glazing with the slimmest possible double-glazing, to have the correct style of bars along with dark spacers that would blend in.

“The Timber Windows team were very helpful in liaising on the application, and the final approval was gained in the standard 3-month timescale.”

All specified in a finish of ‘Black’ with Antique Pewter Monkeytail handles and pegstays, the flush casement windows have 14mm ultra-slim double-glazed units, and feature putty finishing.

“To the eye, it is barely possible to tell that the units are double-glazed, but the difference to our lives has been significant. The busy passing road can hardly be heard and the cold air getting in, is a thing of the past.”

Along with the new, traditionally crafted thatched roof, the cottage is ready for the coach parties of adoring tourists that often stop to get photos of a beautiful, historic home!



Flush casement windows finished in ‘Black’ with 14mm ultra-slim double-glazing, putty finishing, 24mm true bars, and Antique Pewter Monkeytail handles and pegstays.



“It is barely possible to tell that the units are double-glazed.”



WHY TIMBER WINDOWS *listed...?*



Finding a local craftsman to repair your period windows may appear an appealing solution - but you may finish up with windows with so many repaired elements, there is little of the “original” left.



TIMBER WINDOWS OFFERS A *complete* SERVICE



An endless cycle of repair

Rather like the story about grandmother’s broom - where the original brush and handle had both worn out and been replaced - listed window repair can have similar issues.

Rotten wood carefully removed, only to be filled with plastic filler, cracked glass panes replaced with heavier modern glazing leaving sash windows closing by themselves, modern putty and seals installed... the windows may look the same once painted, but inevitably their appearance and functionality will not last for long.

With an endless repair cycle - repairing the repair - inevitably little of the original window is left. Original solid wood frames will also continue to warp, swell, twist and stick.

Replacement where permitted

Where replacement is agreed, the Timber Windows Listed Collection can provide virtual like for like alternatives.

Years of research, examining the nuances of period window and door design and construction, has resulted in a range that has already satisfied planning departments in some of this country’s most desirable historic areas.

The authentic appearance is achieved using engineered timber which is stronger, longer lasting and guaranteed to remain a perfect fit whatever the weather. Our glazing options will provide better insulation and sound proofing, whilst the paint is applied in a closely controlled environment to ensure quality and consistency.

Continual development and innovation mean our Listed product range will suit an extremely wide variety of British property types and historic periods, no matter how grand or modest.



BUILT FROM THE FABRIC OF HISTORY



Nestled deep in the countryside is this spectacular mansion steeped in history. With origins dating back to the 16th century, the wooden structure of the house is said to have been constructed using beams of a battleship donated by King William III following defeat of the Spanish Armada.

Having moved in two years ago, the house is now owned by Mr & Mrs Burke who have undertaken a major refurbishment project to return it to its former glory following years of neglect.

“The old windows were beyond repair and didn’t open; it’s good to be able to open the windows now.” Mr Burke says.

In total, 49 windows and doors have been fitted including flush casements, a circular window, French doors and an entrance door, all finished in Off White. The magnificent arched solid wood door remains in its rightful place.

Regarding the installation, Mr Burke comments, *“The fitting team were great, we didn’t even need to redecorate, nor did we have to do any touching up.”*

Overall the reaction has been extremely positive, *“We’re really pleased with them, particularly in the kitchen where they’ve let a lot more light in. We’re very lucky to live here in this amazing setting.”*

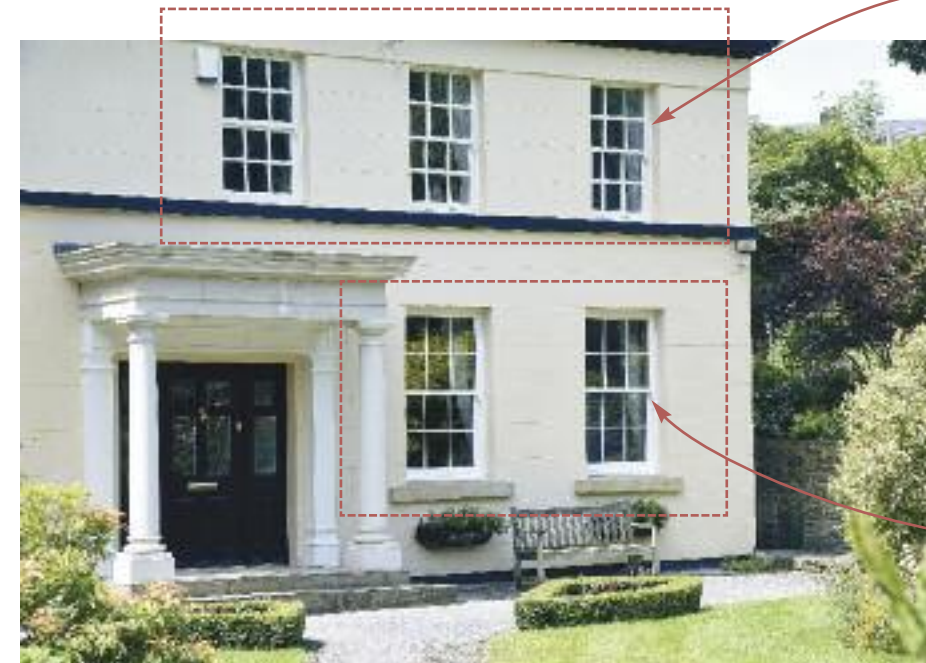


SIGHTLINES

Providing balance & visual impact



WE ARE *expert* WINDOW MAKERS



Existing replacement windows, Note: the thicker through bars, and incorrectly sized meeting rails and bottom rails

“With an eye for detail we can match your old windows, true to the originals with added endurance & longevity”

New replacement Sash windows by Timber Windows, Note: The thinner through bars, true to the originals

Well-thought out sightlines can make all the difference to the visual impact of your property. Wherever possible, the horizontal lines formed by window bars should match up across the windows and doors of the property. The annotated illustration opposite shows this design 'trick' more clearly.

This works particularly well for double-fronted houses with central front doors, but can also smarten semi-detached and terraced homes considerably, bringing balance and elegance. We can also ensure that any non-opening (or dummy) sashes are in-line with those that do open.

Whilst grand buildings - especially from the Georgian and Victorian periods - conjure this design feature effortlessly, the good news is that your local Timber Windows showroom will include this as part of your project, advising on how best to bring balance to the look of your home's new windows and doors.

There is one over-riding idea to keep front of mind when replacing windows in a listed home - they must be “sensitive” to the age, construction and appearance of the original building.

The proportions of timber, meeting rails and glazing bars, along with correctly specified glazing are all important considerations in referencing existing and original windows to replicate the details wherever possible.

All too often we arrive to find previous replacement windows that are anything but “sensitive”, especially with regard to the frame depths and through bars.

Overly heavy and far too wide, these can all too easily spoil the appearance not just of the windows, but on the home itself.

The annotated image above shows just what can happen, but with expert guidance, especially from your planning officer and Timber Windows showroom, these issues can be avoided.



Architectural INTEGRITY

*T*his Oxfordshire property is the spectacular home of the Noakes family, who have undertaken huge renovation works in their 7 years of ownership.

With the main house dating to the 1600s, it also has a Grade II Listed status.

When asked about the process of making such changes to the house, particularly the windows and doors, Mrs Noakes explained that having a good architect was one of the key components in the process, *“our architect worked very closely with the local planning officers to understand the requirements, and in the end approval came easily, through being able to demonstrate that we were going to use appropriate windows and doors, and they were products that would last a long time.”*

THE HOMEOWNERS WERE
SUCCESSFUL IN GAINING
APPROVAL TO REPLACE
SINGLE GLAZED PRODUCTS,
WITH OUR **ULTRA-SLIM**
DOUBLE-GLAZED ONES.



Flush casement windows finished in a colour complementary to Farrow & Ball's 'Hardwick White' externally and 'Ammonite' internally with 24mm true bars, putty glazing and 14mm ultra slim double-glazed units.

PUTTY GLAZING AND TRUE BARS WITH INDIVIDUAL GLASS UNITS
ARE **UNIQUE** TO OUR **LISTED RANGE**, AND ARE SOME OF THE FEATURES
THAT HAVE MADE OUR PRODUCTS VERY SUCCESSFUL IN BEING **ACCEPTED**
AS REPLACEMENTS IN LISTED PROPERTIES.



Belbroughton entrance door finished in a colour complementary to Farrow & Ball 'Hardwick White' externally, with 24mm true bars, putty finished bolection moulding (exclusive to the Timber Windows Listed range) and Regent handle in 316 Coastal Grade Stainless Steel.

Replacing old single-glazed windows and doors, the homeowners were successful in gaining approval for our ultra slim, double-glazed products, and as Mrs Noakes comments, *“the planners were very satisfied.”*

Flush casement windows were selected throughout, from our Listed range, finished in colours complementary to Farrow & Ball 'Hardwick White' externally and 'Ammonite' internally, along with a set of French doors and a single entrance door.

“Initially we had a consultation at the house from a representative of Timber Windows, and we then made a visit to the Oxford showroom to pin down the details – it was all very easy and straight-forward.”

*“Overall, we have been very pleased with everything...
...We have already recommended Timber Windows to a number of other families.”*



French doors finished in a colour complementary to Farrow & Ball 'Hardwick White' externally, with 24mm true bars, putty finished bolection moulding (exclusive to the Timber Windows Listed range) and Regent handle in 316 Coastal Grade Stainless Steel.



PLACE *in History*

“The wind can howl all it likes outside, but we are very warm and snug indoors!”



“The new windows have not only transformed the look of the house in their lovely new colour, but have made living in it so much nicer too.”

“Our heating usage has dropped dramatically and the house no longer feels draughty.”



Staverton entrance door finished in a Dark Oak stain with a Black Avon handle and Blacksmith Traditional Letterbox.

Pennybrook Cottage, named after the body of water nearby, has sat in this Essex village since the early 1800s and has a Grade II listing on account of it being an exceptionally unaltered example of a farm workers cottage of its age.

The owners, Mr & Mrs Dempsey have lived in the cottage for many years, having raised their family here, and now decided it was time to improve both their comfort and its appearance.

“The windows were all single glazed; they were very draughty, and in strong winds the curtains would actually blow!”

“Dirt and dust from the surrounding fields would blow in, settling on the window boards and make housework a constant chore. They were very difficult to maintain and did not do justice to the quaint cottage” Mrs Dempsey describes.

Gaining approval from Maldon District Council for ultra-slim double-glazed 14mm units, putty glazed with a horizontal 24mm true bar, the owners selected the shade of Tent Grey for the majority of their new windows and doors, along with a Dark Oak stained front door for the makeover they were giving their cottage.

The planning process was a fairly in-depth one, requiring plans and drawings comparing existing and proposed items, to demonstrate their appearance was suitable, *“the slim 14mm glazing of the Listed range allowed for a narrower profile, which was definitely a positive, and the putty glazing was also a huge advantage in securing the permission required”.*



Cottage casement windows finished in 'Tent Grey' with 14mm ultra slim double glazed, putty finishing and 24mm true bars.





True CRAFTSMANSHIP

The Brockhampton Park Estate is steeped in history, built in the mid 1600s and heavily protected with a Grade II listing. In the late 1800s the estate underwent expansion, adding extra buildings such as a carriage house and a game house, with all of these extra buildings eventually becoming residences in the 1990s. One of the portions of the game house within the Gloucestershire manor is now the home of Mr & Mrs Brassington.



Cottage flush casement windows in the shade of 'Oxide Gold' externally and 'Off-White' internally with 24mm true bars, putty glazed and 14mm ultra slim double glazed units.

Under the very watchful eye of Cotswold District Council, the Brassingtons opted to improve their Grade II listed cottage (based on its curtilage to the main house). Such is the level of guardianship over the estate, any application was initially refused until the homeowners were able to demonstrate that a more elegant solution was available from the Timber Windows range when compared to the existing, 1990s-installed windows, resulting in approval of the application.

The fine, true bars and putty finish against the ultra-slim double-glazed unit in our product is a much slimmer solution in comparison to those already installed.

“The windows are lovely. The craftsmanship and quality are excellent; the fitting was also carried out exceptionally well.”

“We’re very happy to be preserving the property. In areas without restrictions, structures tend to get ruined.”

“The putty work is amazing, extraordinarily good.”



Blank Monkeytail handles and pegstays feature throughout all windows.





Glazing options



4mm single glazed.



14mm ultra slim unit with krypton gas.



24mm with argon gas / 18mm with krypton gas high performance units.

(Diagram shows 24mm unit)



GLAZING MATTERS



“Of crucial importance to the acceptability of newly crafted windows and doors in historic settings, is the specification of glazing.”

Of crucial importance to the acceptability of newly crafted windows and doors in historic settings, is the specification of glazing.

Referencing existing buildings and local style of fenestration is the key to closely replicating window and door design.

Through bars and putty glazing are bespoke elements that set our Listed range apart.

The range carries a number of glazing options to suit everyone's requirements from a conservation and a lifestyle stand point in terms of specification, giving the required aesthetics while regulating heat effectively and vastly improving sound insulation.

The 4mm single glazed pane and the ultra slim double glazed 14mm unit filled with krypton gas are hand finished with a traditional style putty and are available with a 22mm or 24mm wide glazing bar respectively, all features designed for the most stringent planning areas.

Our high performance 24mm or 18mm double glazed units, filled with argon gas and krypton gas respectively have the option of either an 18mm or 27mm wide glazing bar, ideal where regulatory restrictions are less rigorous.





Elegantly styled

SASH WINDOWS

Timber Windows' Listed sash windows are made to order in styles to enable sensitive replacement in a wide variety of period homes.

Our beautifully designed sash windows replicate closely the details found in original windows of characterful period homes across the country.

Our sash windows are hung on traditional cords, pre-stretched to accommodate the weight of the glazed units, along with smooth running chains also being an option.

Sash windows are available hand finished in hundreds of heritage paint shades.

A range of authentic ironmongery such as D-handles, fasteners, lifts and other accessories are available in a collection of appearances providing the finishing touch to the styling of your windows.



History REPEATED



Set in 600 acres of farm land in the West Yorkshire countryside, Mr Laybourn's perfectly formed home has had a rich and varied history. The building's origins are as an orangery to a manor house that once stood nearby, providing a bright environment to cultivate produce for use on the estate. Much later, the structure was used as a chicken shed with the window openings bricked up before finally falling into a state of disrepair.

"As the structure is a listed building, I had extremely strict hurdles to overcome and eventually managed to convince the council that the building was better preserved being used as a residence than falling apart. Olly from Timber Windows at Harewood played a big role in the process of gaining permissions by demonstrating the authenticity of the products I wanted to use,"

Mr Laybourn explains.



The building's origins are as an orangery



The new sash windows had to match the style and formation of the glazing bars from the original windows, the frames of which were still present once the openings were revealed.

The façade of the building is dominated by the towering windows and door, the sashes standing at almost three metres high and their appearance arguably plays the most important part in the overall look.

Mr Laybourn explains his delight at their arrival during the lengthy project. *“The day the windows went in was the best day of the whole project as it signalled the transition from a hollow barn to my future home.”*

Finished in a soft shade of Cream, the door and windows are all manufactured in engineered European redwood and also feature authentic astragal bars. The sashes are hung on attractive brass chains and weights.

“We were amazed at how good they were. The products have been in place for over two years now and haven’t weathered at all.”



Much later, the structure was used as a chicken shed !

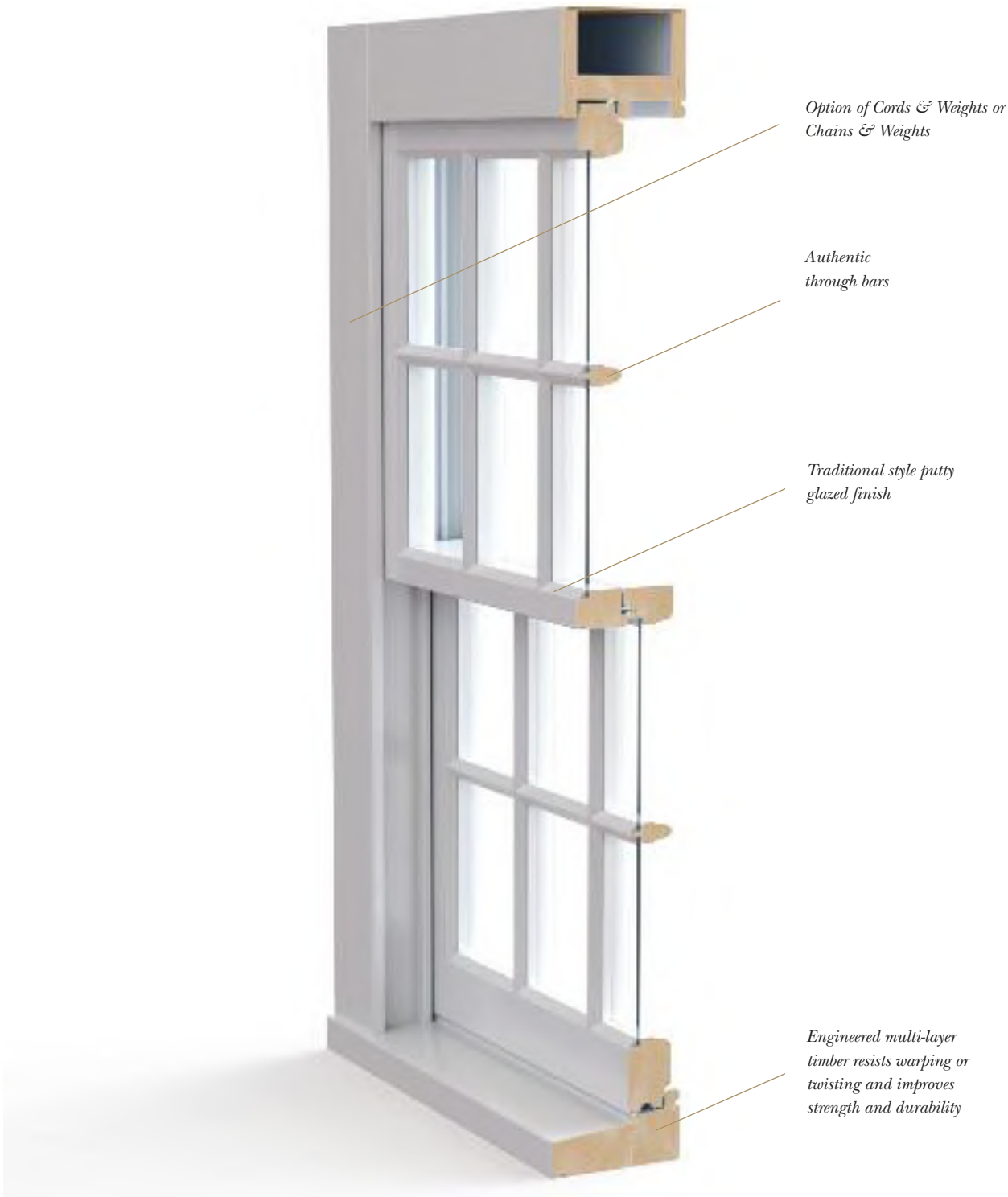


“AS A LISTED BUILDING, I HAD EXTREMELY STRICT HURDLES TO OVERCOME BUT WE SUCCESSFULLY DEMONSTRATED THE AUTHENTICITY OF THE WINDOWS I WANTED TO USE”





Traditional sash window with 4mm single glazing



Back in TIME

listed SASH, CASEMENT & FRENCH DOOR CASE STUDY

The Grade II Listed Kent home of Mr & Mrs Darlow has a history as impressive as its appearance.

Originating somewhere around the late 1600s and early 1700s, with Victorian extensions, the house is a significant property in the local area; it is this and its visibility from nearby country lanes that attracted the Grade II listed status.

Mr & Mrs Darlow explain the process,

“it wasn’t an easy journey to be allowed to replace the windows here; our local authority was very particular about the astragal bar sizes.”



Slim sash windows hung on traditional cords and weights mechanisms, finished in White with 14mm ultra slim, putty finished double-glazed units and 24mm true bars.



“The house feels more comfortable now”

Flush casement windows finished in White with 14mm ultra slim, putty finished double-glazed units, 24mm true bars and Antique Pewter Monkeytail handles.

“We were permitted to have double-glazing, but it had to be the slimmest double-glazed unit available.”

Our slim box sash windows were chosen throughout, each running on traditional cords and weights mechanisms, and featuring 24mm true bars with authentic putty finishing to the glazing. The ultra-slim 14mm double glazed units complete the authority approved factory painted and finished windows.

After ten years living in a house that was hard to heat, with draughty windows, the owners were delighted that the planning officer agreed to the solution on offer from Timber Windows.

“We needed the slimmest double-glazing unit and the correct sized astragal bars to satisfy the planning officers.”













Custom shape Chalfont front door design finished in 'Tent Grey' featuring Etched Sun glass, accessorised with Bronze letter plate, handle, knocker and escutcheon from Samuel Heath.

Grade II Listed, a conservation area, an original structure on a historic site, wishing to change window designs and situated within the boundary of a National Park; it would possibly be expected that the odds were stacked against approval, however Mr and Mrs Toogood successfully gained agreement for their new, sympathetically styled windows and door.

DESIGNED FOR APPROVAL

Originally a cow shed, dating to the 1670s, the building's large arched window, harks to its use as a doorway for the carts. The building was given listed status based on its age and being one of just three original structures in the area.

Mr & Mrs Toogood explain *“the house was freezing previously, the windows were poorly fitted and had various makeshift solutions to plug holes or keep them closed – we didn’t know what would be found once the installation started; the team did an excellent job of the fitting.”*

“Having the drawings and specifications from the Timber Windows system was excellent for demonstrating all the information to the planners.”



The absence of glazing bars in windows often makes the process slightly simpler in planning terms and as was the case here, the homeowners were able to gain approval for 18mm double glazed units in some of the items.

“The house already feels a lot warmer and throughout the recent winter, the heating was used far less.”



Slim sash windows, flush casements and cottage casements all finished in 'Tent Grey' and manufactured in Engineered Meranti Hardwood featuring 18mm double glazed units and 4mm single glazing also.



*It's all about the **DETAIL***

“An impressive range of traditional hardware to suit your listed project, together with options & finishes can be seen in our showrooms”



Fungal & Insect	Sealed Unit	Hardware	Workmanship	Paint	Stain
					
30 YEARS GUARANTEE	10 YEARS* GUARANTEE	10 YEARS GUARANTEE	10 YEARS GUARANTEE	12 YEARS GUARANTEE	6 YEARS ⁺ GUARANTEE

* 5 years for 14mm double glazed units. + Not applicable to putty finished products.



Traditionally styled

CASEMENT WINDOWS

Styled specifically to satisfy the requirements of conservation and planning regulations when replacing period casement windows, our Listed Casement range vary in their features and details depending on the local and geographic requirements.

The 4mm single glazed pane and the ultra slim double glazed 14mm unit filled with krypton gas are hand finished with a traditional style putty and are available with a 22mm or 24mm wide glazing bar respectively, all features designed for the most stringent planning areas.

Our high performance 24mm or 18mm double glazed units, filled with argon gas and krypton gas respectively have the option of either an 18mm or 27mm wide glazing bar, ideal where regulatory restrictions are less rigorous.

Our casements are available in different styles to suit different situations.

The flush casement closes into the frame giving a flush finish across the face of the window. This simple yet elegant design can be found in most mediaeval buildings, cottages and houses of all periods.

Specially designed sections are added to the front face of the window to create our Deco casements, which allow the opening sashes to appear recessed within the frame. An important detail common to the inter-war period of the 1930's, the stepping back of the sashes provides a degree of modelling to the façade of urban homes.

Through the use of slimmer sections and designing out the need for vertical mullions, the Cottage flush casement allows approximately ten percent more light into the building, ideally suited to traditional cottages and the replacement of their smaller, finely constructed original windows.

A variety of arched and shaped windows, including gabled and triangular frames, are also available.

Casement Windows are available hand finished in hundreds of heritage paint shades, whilst a choice of traditional ironmongery in a range of finishes help to complete the windows.





IMPROVING A CLASSIC

When Mr & Mrs Cutler decided it was time to update their 400 year old cottage sitting within a conservation area village near Coventry, they thought they had found the right supplier of windows and doors in Timber Windows, but wanted to see how we performed. ““The front door was ordered on its own to begin with by way of a test of both the product and service.”

Satisfied with their new door, the Cutler's returned six months later to replace the windows and other doors throughout the house.” *We must have wooden windows in this property; the original houses in the village have a special designation to preserve them. Our old wooden windows were failing all round and we recognised we could do much better now.”*

“THE ORIGINAL
HOUSES IN
THE VILLAGE
HAVE A SPECIAL
DESIGNATION TO
PRESERVE THEM”



The new front door is a Norham design finished in Oxford Clay with a French Grey frame and is dual coloured with a White finish internally. The door features Queen Anne decorative glass along with chrome ironmongery. “*We feel the windows and doors now suit the house much better in colour terms, and have attracted many nice comments from passers-by.*”

The flush casement windows, French doors and stable door are all finished in French Grey externally and White internally, with a fine horizontal astragal glazing bar to the windows. “*The fitting team carried out a very tidy job and finished it off beautifully. The noise and weather proofing is greatly improved and we love the stable door; it's very practical with the dog and provides a nice connection to the garden.*”





Preservation & PROTECTION

Gaining planning approval for homes within the heavily protected Yorkshire Dales National Park comes with its challenges, however these have not proved unsurmountable in specifying the Timber Windows Listed range of windows for Ms Shaw's cottage; a Grade II Listed, 17th Century example, successfully granted permission for our casement windows.

“The detailed, computerised drawings and specifications provided by Timber Windows were a big advantage and made the process much easier when filling in all the forms, as all the information I required was at my fingertips”

Ms Shaw explains.





Cottage flush casement windows featuring 14mm ultra slim double glazed units with krypton gas, 24mm true bars and putty glazing, externally finished in the shade of 'Dorset Cream' and internally in 'White'.

Our ultra-slim 14mm double-glazed units were permitted in replacing single glazed windows.

“In an area where even the sheds and greenhouses in your garden require planning permission, as you would expect, the planning officers were diligent in checking the details of bar style, putty finishing and bar placement, and yet our application sailed through in just 8 weeks.”

“We’re happy to live in a conservation area and that our home has the listed status, as we’re ensuring its preservation now and in the future. In terms of the windows, apart from the vastly improved aesthetics, we’re pleased to no longer have to use the shutters to keep warmth in nor having to clean off the regular build ups of black mould and condensation.”



Ironmongery options selected as Black period iron style 'Avon' handles and pegstays.



CLASSIC *combination*



Set in the grounds of a late 17th century country house, in a charming Hampshire village, the home of Mr & Mrs Baxter, has been the subject of a planning contention, now resolved thanks to the product options from Timber Windows.

The Grade II listing of the house and its associated structures along with some added complications, meant that our showroom specialists in Hartley Wintney took on the professional planning services of Bell Cornwell to prepare the appropriate documentation and subsequent appeal for the local council.

“The outcome has been worth the difficulties in the process”



Chalfont front door with townhouse-style locking system, finished in Farrow & Ball 'White Tie' featuring Polished Brass Doctor's knocker, Medium sized letterplate and escutcheon, all from Samuel Heath.



The two-year process resulted in nine windows and the front door being replaced.

“We are happy to have pursued the process despite the difficulties” the homeowners comment.

Cottage casements with 14mm ultra slim putty finished double glazing, some with 24mm true bars were specified along with a Chalfont door, all in a colour complementary to Farrow & Ball 'White Tie'.

“Certain windows had previously been replaced some time ago, but with single glazing and we were keen to gain double glazing for comfort.”

Mr & Mrs Baxter are now very satisfied in their cosy home, with its enhanced traditional and authentic appearance.

“We are very impressed with our new windows, both aesthetically and in terms of comfort”

Cottage casement windows, finished in a colour complementary to Farrow & Ball 'White Tie', featuring 14mm ultra slim putty finished double-glazed units (some windows also have 24mm true bars).

“They’re amazing”



Note: leaded designs are only available with our high performance double glazed 18mm and 24mm units.



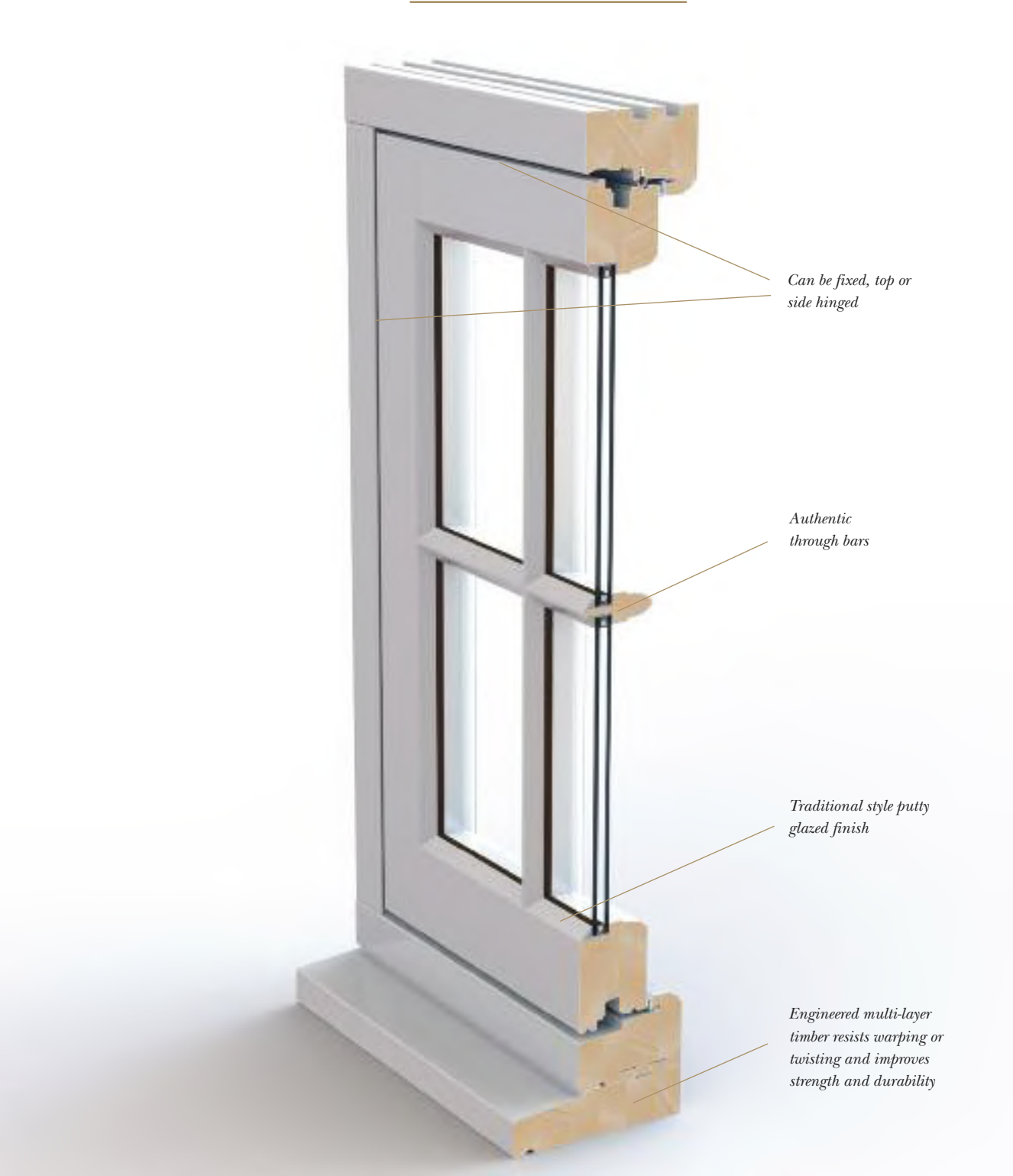


Note: leaded designs are only available with our high performance double glazed 18mm and 24mm units.





14mm ultra slim double glazed casement window





In this idyllic Oxfordshire village, a listed status was added to a number of properties around 30 years ago, in the interests of keeping the area looking the way it should.

One of the cottages under this designation with Grade II listed status, is the home of Mrs Grant.

“I had a couple of rear windows replaced a few years ago before discovering the Timber Windows product – these haven’t worked out so well, and I wish I’d found Timber Windows first.”



Replacing dark brown coloured windows, Mrs Grant opted for flush casement windows in a colour complementary to Farrow & Ball ‘Pointing’, a subtle, off-white shade. A simple horizontal 24mm true bar adds detail while 14mm ultra slim double-glazing units with traditional putty glazing, bring comfort and warmth.

“The main reason for making the replacements was due to draughts, but I hadn’t expected there to be such an improvement on the noise front too”

Mrs Grant is delighted to say.

“Despite applying to replace single glazing with double glazed windows, I had no issue with the Timber Windows product being approved by the planning authority.”

Smooth SAILING

Flush casement windows in a colour complementary to Farrow & Ball ‘Pointing’ with 24mm true bars, putty glazing and 14mm ultra-slim double glazed units.



Modern HERITAGE





With origins to the mid 1700s, Mr & Mrs Whelan’s Cambridgeshire home was desperately in need of changes to make their living conditions more comfortable, “some of the windows were believed to be the originals, with thin picture glass, all having had numerous repairs and the addition of secondary glazing, however it had come to the point where there was nothing further that could be done to maintain these” they describe.

The owners wished to replicate the original cottage style design, as well as have the benefits of a modern window, “It was good to be able to visit a showroom, and to have a pressure-free overview of the available options. The quotes included a few options to consider; the information was all patiently provided, and the home visits were extremely helpful.”

Cottage casement windows were chosen in the shade of “Off-White” with 22mm true bars, 14mm ultra slim double glazing and authentic putty glazing.

“The fitting team were extremely good with a high level of attention to detail”.

“The putty glazed windows sit very well with the exterior of an old property, and it is a delight not to have the secondary glazing. The standard of the paint finish looks almost miraculous compared with what was there before; a huge improvement.



Cottage flush casement windows finished in “Off-White” featuring 24mm true bars, putty glazing and 14mm ultra slim double-glazed units.



BLAZING *a Trail*



Flush casement windows finished in 'Off-White' featuring 14mm ultra-slim double-glazed units with krypton gas, along with 24mm true bars and putty glazing.



Ironmongery options selected as Black Peardrop handles



As the first one of his row of terraced, 1820's cottages to attempt to change the windows, Mr Newby's recently refurbished home has drawn much attention from interested neighbours.

The Harewood House estate workers cottages were designated a Grade II listing in the 1960s to give them a protected status.

“Leeds City Council set out very clearly, the parameters of what would or wouldn't be permitted. They informed me that the Ultra-Slim 14mm double glazed windows would be permissible, so I was able to make my application on this basis” explains Mr Newby.

Planning consent was required for all changes to the property, even those to the rear of the property, much to Mr Newby's surprise.

“The showroom team were great, and excellent to deal with, offering very helpful advice”

Admiration for the new windows has come from all quarters, *“Passers-by and neighbours have been admiring them; the neighbours have a particularly keen interest and one has already had a quote to make the same changes.”*

“With a fairly major road out the front of the house, I have really noticed the reduction in noise too.”





With an extensive range of handles, pegstays and locking pins, we will help to ensure that your casement windows are both easy to use and maintain their listed appearance.

We offer a wide choice of finishes including chrome, black, polished brass, satin chrome and antique pewter, among others. Our Samuel Heath range delivers exquisite quality and inspirational designs.

Fungal & Insect	Sealed Unit	Hardware	Workmanship	Paint	Stain
					
30 YEARS GUARANTEE	10 YEARS* GUARANTEE	10 YEARS GUARANTEE	10 YEARS GUARANTEE	12 YEARS GUARANTEE	6 YEARS ⁺ GUARANTEE

* 5 years for 14mm double glazed units. + Not applicable to putty finished products.

It's all about the **DETAIL**

“Traditional hardware in an extensive range of finishes helps complement every project perfectly.”





Authentically styled

FRENCH DOORS

Practical yet beautiful, the Timber Windows range of French Doors can enhance both your home and lifestyle, providing easy access to outdoor spaces.

Authentically styled, these doors offer the flexibility of opening inwards or outwards, with either door designed to open first.

The 4mm single glazed pane and the ultra slim double glazed 14mm unit filled with krypton gas are hand finished with a traditional style putty and are available with a 22mm or 24mm wide glazing bar respectively, all features designed for the most stringent planning areas.

Our high performance 24mm or 18mm double glazed units, filled with argon gas and krypton gas respectively have the option of either an 18mm or 27mm wide glazing bar, ideal where regulatory restrictions are less rigorous.

Constructed to the same exacting standards as our windows, with timber guaranteed for decades, our French Doors incorporate a host of technical innovations for absolute peace of mind.

The following pages show how our French Doors have added flexibility and elegance to a variety of homes.





THE BEAUTY OF BESPOKE



French doors finished in 'White' with 4mm single putty glazing, bolection moulding and 22mm true bars, finished with a Profile handle in Polished Brass Unlacquered from Samuel Heath.

Mr & Mrs Barlow were keen to preserve the Grade II Listed property that they call home in a beautiful part of West Sussex.

In need of particular attention were the bay formed front and French doors – it took the owners around two years to get permission from the presiding authority, and despite being refused twice, they persisted and were granted agreement to use our single glazed products.

A Kingston entrance door along with a slim set of French doors both adorn the front of the property, in bay formations. Single 4mm putty glazing were prerequisites to the requirements, and whilst many owners will wish for double glazing, our single panes provide much greater comfort than the equivalents of old.

“The doors and windows here before were put in by a builder, and were very poor – they required regular repainting and were always sticking”
Mrs Barlow recalls.

Commenting on the difference, Mrs Barlow says, *“these are wonderful compared to before, we are very happy with everything.”*

“I found the staff and installers to be excellent, helpful and patient throughout.”



Kingston design front door finished in 'White' with 4mm single putty glazing and bolection moulding. Ironmongery from Samuel Heath includes an Extended Profile handle, Ring knocker and Medium sized letter plate in Polished Brass Unlacquered. The side window panels are also single putty glazed and feature 22mm true bars.







ENGINEERED TIMBER TRADITIONAL WOOD

MAKING THE RIGHT CHOICE

Traditional wood is both beautiful and tactile, the natural choice for windows and doors in some of this country's most beautiful and historic areas. However traditional wood has innate problems - a natural tendency to expand and contract, and when wet, to warp in the direction of the grain resulting in windows and doors that twist and stick, causing frustration for homeowners.

Engineered, or multi-layered timber, is an innovative solution that counteracts these issues. It is created by layering wood sections, with the grain of one section of wood layered in the opposing direction to the grain of its neighbour.



STRONGER & LONGER LASTING

As wet wood has a tendency to warp in the direction of the grain, layering the wood in this way ensures that any movement caused by the absorption of moisture is evened out. So engineered timber is stronger, longer lasting and resistant to the issues that affect traditional wood. Windows and doors made with engineered timber retain their strength and structure, ensuring that they remain a perfect fit, just as they did on the day they were installed.

Using engineered timber ensures that there is no warping or twisting, sticking or rubbing, no matter how damp the prevailing atmospheric conditions. This makes it the perfect choice for every area of the UK - no matter how exposed the location.

FINISHED BY HAND

Engineered timber is also far easier to work with. It can be used to meet the design specifications of complex windows and doors much more efficiently than solid wood, yet retaining all of its natural appeal. And whilst state of the art computer controlled machinery inevitably plays its part, all of our engineered timber windows and doors are hand finished before being subjected to rigorous quality control, with every aspect of the construction and glazing fully checked and re-checked..

So put us to the test - visit one of our Timber Windows showrooms and see for yourself how timber has changed.





THE REASSURANCE OF DEALING WITH A *local* SPECIALIST

49 STUNNING SHOWROOMS NATIONWIDE

The Timber Windows service is delivered with care by knowledgeable local specialists whose reputation is built on providing an attentive service from initial enquiry to the completion of your project.

WHAT TO EXPECT

Our local showrooms provide the perfect environment to browse the many options available, with expert guidance on hand to help you make an informed decision.

Showrooms

1. Amersham
2. Battersea
3. Bournemouth
4. Blandford
5. Cardiff
6. Carmarthen
7. Caterham
8. Channel Islands
9. Cheltenham
10. Cirencester
11. Clifton (Bristol)
12. Colchester
13. Denbigh
14. Dulwich
15. Esher
16. Farnham (Bury St Edmunds)
17. Guildford
18. Harborne, Birmingham
19. Harrogate
20. Hartley Wintney
21. Heathfield
22. Henley on Thames
23. Hereford
24. Honiton
25. Hordean
26. Horsham
27. Ingatestone
28. Ivybridge
29. Knutsford
30. Leamington Spa
31. Lincoln
32. Maidstone
33. Moreton-in-Marsh
34. Nottingham
35. Olney
36. Oxford
37. Reigate
38. Ripley
39. Saffron Walden
40. Salisbury
41. Sheffield
42. Shrewsbury
43. Stamford
44. St. Albans
45. Sunningdale
46. Teddington
47. Tunbridge Wells
48. Winchester
49. Woodbridge





OUR SHOWROOM TEAMS ARE *experts* IN THE SPECIFICATION OF OUR WINDOWS & DOORS

local SHOWROOMS, *local* EXPERTS!

Every Timber Windows showroom has comprehensive displays of many door and window designs, architectural hardware and accessories, including those from our exclusive Samuel Heath range, all beautifully presented with the high standard of manufacture and finish clearly visible.

Our showroom teams are experts in the specification of our windows and doors, and are happy to offer you the benefit of their expertise and experience in a completely unbiased way.

Through extensive customer case studies they will also be able to demonstrate a variety of completed projects and real customer reactions.

FIND YOUR NEAREST TIMBER WINDOWS

SHOWROOM ONLINE AT

www.timberwindows.com/showrooms

OR CALL 0800 030 2000

We look forward to welcoming you soon!





BEAUTIFUL, HAND-MADE
TIMBER WINDOWS & DOORS
T: 0800 030 2000
www.timberwindows.com




TIMBER
WINDOWS
· LISTED ·

BEAUTIFUL , HANDMADE

TIMBER WINDOWS & DOORS

T: 0800 030 2000

www.timberwindows.com

